

An aerial photograph of a coastal city, likely Dubai, featuring a central road and a bridge crossing a waterway. The city is surrounded by turquoise water and sandy beaches. The text 'ONE PURPOSE' is prominently displayed at the top, with 'OPENING NEW DOORS INTERNATIONALLY' below it.

ONE PURPOSE

OPENING NEW DOORS INTERNATIONALLY

TOP PROJECTS

NOVEMBER 2025

PALM CENTRAL RESIDENCES



Location
PALM JEBEL ALI

Handover
AUG 2029

Payment
Plan

70%
CONSTRUCTION

30%
COMPLETION

| Property Type | Min. Size | Min. Price | aed/sqft | Price USD |
|---------------|-----------|------------|----------|-----------|
| 1 Bedroom | 836 | 2.5m | 2990 | 681,000 |
| 2 Bedroom | 1237 | 4.3m | 3476 | 1.17m |
| 3 Bedroom | 2046 | 7.5m | 3665 | 2.0m |
| 4 Bedroom | 3880 | 12.6m | 3247 | 3.4m |

✓ LAUNCH STATUS

Now collecting EOI - project launching soon



ALDAR FAHID ISLAND



Location
ABU DHABI

Handover
Q2 2029

Payment
Plan

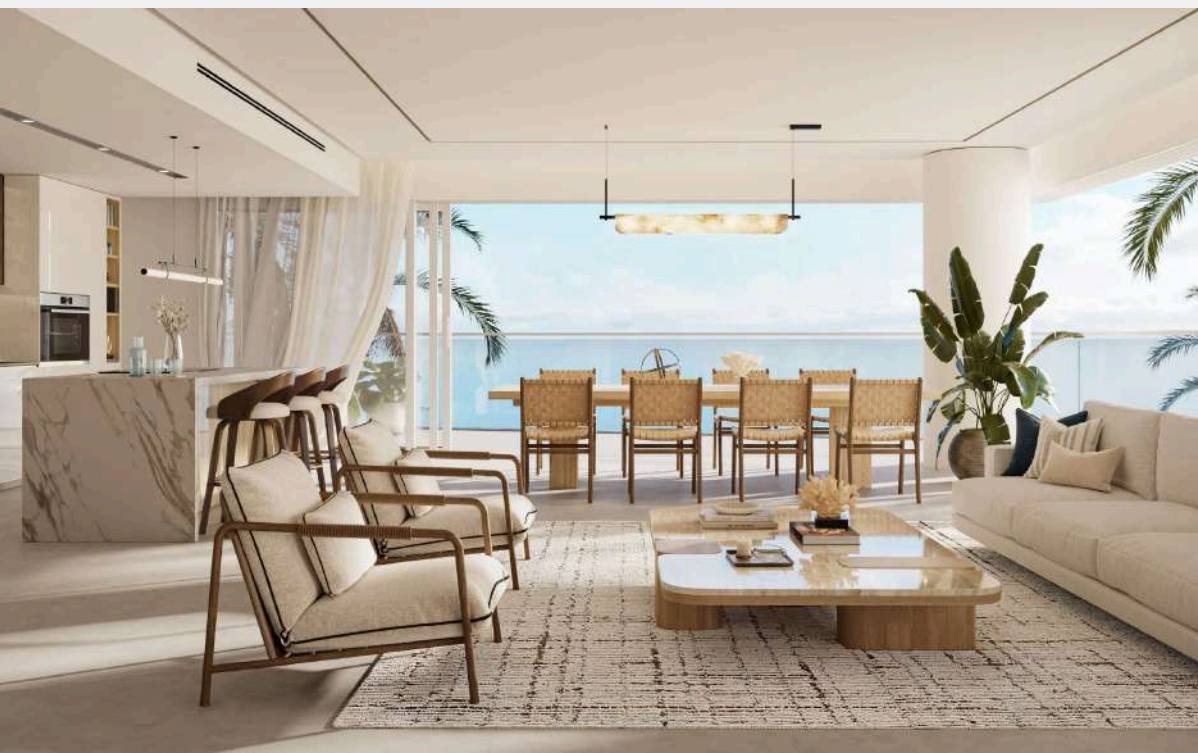
65%
CONSTRUCTION

35%
COMPLETION

| Property Type | Min. Size | Min. Price | aed/sqft | Price USD |
|---------------|-----------|------------|----------|-----------|
| 1 Bedroom | 893 | 2.9m | 3247 | 945,000 |
| 2 Bedroom | 1323 | 4.2m | 3099 | 1.27m |
| 3 Bedroom | 1969 | 6.5m | 3098 | 1.65m |
| 4 Bedroom | - | 11.1m | - | - |

✓ LAUNCH STATUS

JUST LAUNCHED - selling fast



SOBHA SKYPARKS



Location
DOWNTOWN DUBAI

Handover
DEC 2031

Payment
Plan

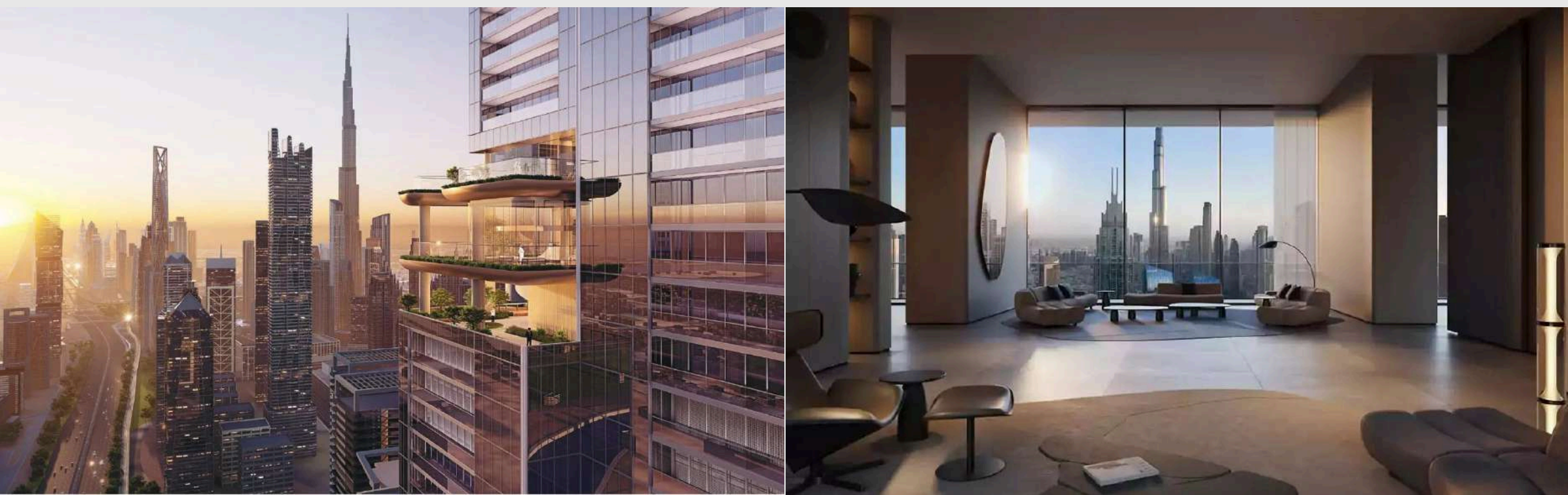
60%
CONSTRUCTION

40%
COMPLETION

| Property Type | Min. Size | Min. Price | aed/sqft | Price USD |
|---------------|-----------|------------|----------|-----------|
| 1 Bedroom | 684 | 2.86m | 4181 | 779,000 |
| 2 Bedroom | 1188 | 4.75m | 3998 | 1.29m |
| 3 Bedroom | 2267 | 9.35m | 4124 | 2.55m |
| - | - | - | - | - |

✓ LAUNCH STATUS

LAUNCHED - NOW SELLING



PALM JEBEL ALI



Location
Palm Jebel Ali

Handover
2029

Payment
Plan

80%
CONSTRUCTION

20%
COMPLETION

| Property Type | Min. Size | Plot Size | Min. Price | aed/sqft | Price USD |
|---------------|-----------|-----------|------------|----------|-----------|
| 5 Bedroom | - | - | 25m | - | 6.8m |
| 6 Bedroom | - | - | 32m | - | 8.7m |
| 7 Bedroom | - | - | 48m | - | 13m |
| - | - | - | - | - | - |

✓ LAUNCH STATUS

Launching Soon - more details to come



BINGHATTI SKYBLADE



Location
DOWNTOWN

Handover
NOV 2027

Payment
Plan

70%
CONSTRUCTION

30%
COMPLETION

| Property Type | Min. Size | Min. Price | aed/sqft | Price USD |
|---------------|-----------|------------|----------|-----------|
| Studio | 378 | 1.67m | 4417 | 455,000 |
| 1 Bedroom | 965 | 3.64m | 3772 | 991,000 |
| 2 Bedroom | 1261 | 4.69m | 3719 | 1.3m |
| 3 Bedroom | 2357 | 14.5m | 6151 | 3.9m |

✓ LAUNCH STATUS

Just Launched



ELLINGTON PORTSIDE SQUARE



Location
PORT RASHID

Handover
Q4 2029

Payment
Plan

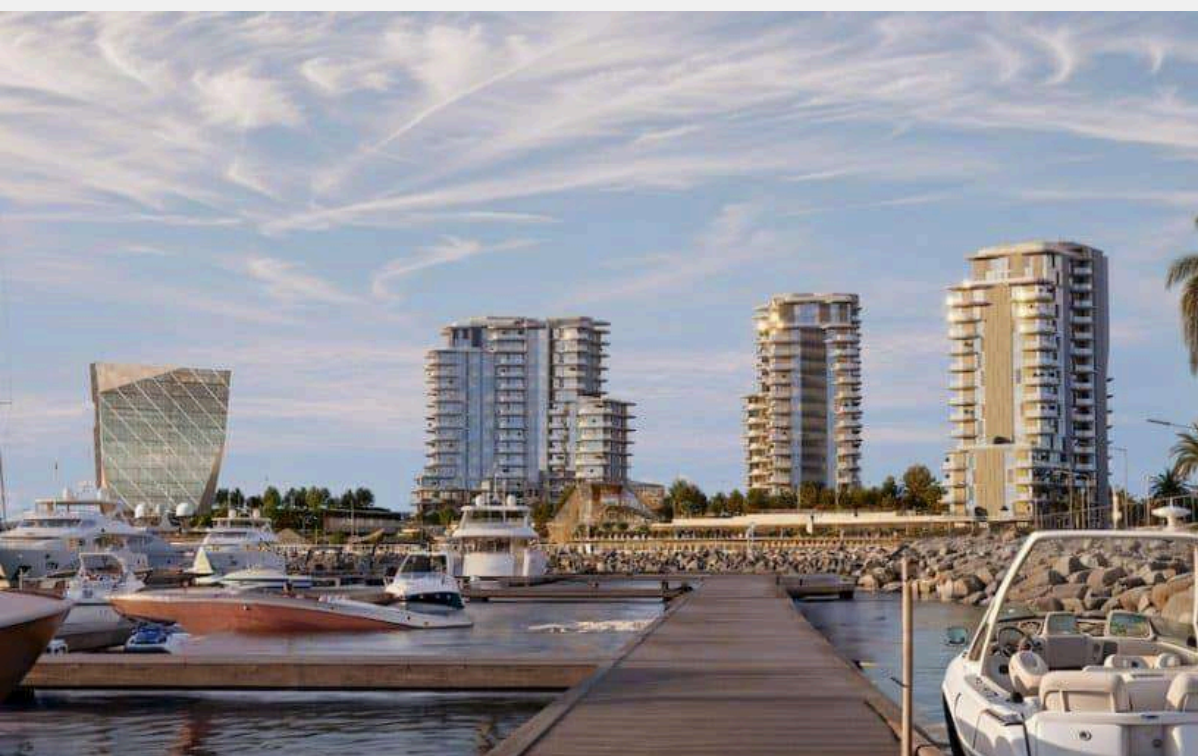
70%
CONSTRUCTION

30%
COMPLETION

| Property Type | Min. Size | Min. Price | aed/sqft | Price USD |
|---------------|-----------|------------|----------|-----------|
| Studio | 396 | 1.5m | 3787 | 408,000 |
| 1 Bedroom | 767 | 2.5m | 3259 | 681,000 |
| 2 Bedroom | 1169 | 3.5m | 2994 | 953,000 |
| 3 Bedroom | 1723 | 5.6m | 3250 | 1.52m |

✓ LAUNCH STATUS

Now collecting EOI - project launching soon



KHALID BIN SULTAN CITY by ZAHA HADID



KHALID BIN SULTAN CITY
مدينة خالد بن سلطان

A DEVELOPMENT BY BEEAH التطوير العقاري من قبل

Location
SHARJAH

Handover
Q3 2029

Payment
Plan

40%
CONSTRUCTION

60%
COMPLETION

| Property Type | Min. Size | Min. Price | aed/sqft | Price USD |
|-----------------|-----------|------------|----------|-----------|
| 2 Bed Townhouse | 2255 | 1.85m | 820 | 504,000 |
| 3 Bed Townhouse | 2619 | 2.3m | 878 | 626,000 |
| 4 Bed Villa | 3855 | 4.4m | 1141 | 1.14m |
| 5 Bed Villa | 5476 | 5.6m | 1022 | 1.52m |

✓ LAUNCH STATUS

Now collecting EOI - project launching soon



KHALID BIN SULTAN CITY
مدينة خالد بن سلطان

A DEVELOPMENT BY BEEAH التطوير العقاري من قبل



DOWNTOWN UAQ



Location
UMM AL QUWAIN

Handover
Q2 2028

Payment
Plan

60%
CONSTRUCTION

40%
COMPLETION

| Property Type | Min. Size | Min. Price | aed/sqft | Price USD |
|---------------|-----------|------------|----------|-----------|
| 1 Bedroom | 565 | 1.2m | 2000 | 307,000 |
| 2 Bedroom | 731 | 1.5m | 2050 | 392,000 |
| 3 Bedroom | 2167 | 4.33m | 2000 | 1.17m |
| - | - | - | - | - |

✓ LAUNCH STATUS

1ST PHASE LAUNCHED - MORE COMING SOON



BEYOND SOULEVER



Location
MARITIME CITY

Handover
Q1 2029

Payment
Plan

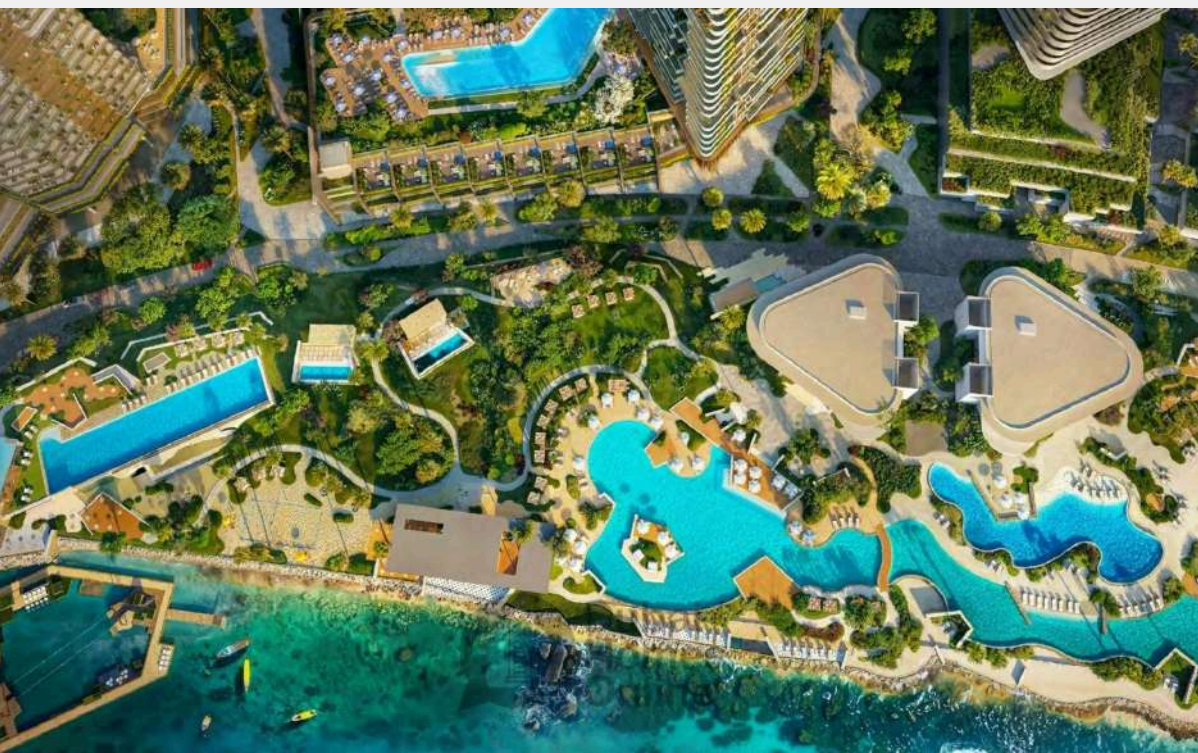
50%
CONSTRUCTION

50%
COMPLETION

| Property Type | Min. Size | Min. Price | aed/sqft | Price USD |
|---------------|-----------|------------|----------|-----------|
| 1 Bedroom | 839 | 2.53m | 3015 | 689,000 |
| 2 Bedroom | 1256 | 4.7m | 3742 | 1.3m |
| 3 Bedroom | 1838 | 7.6m | 4134 | 2.1m |
| - | - | - | - | - |

✓ LAUNCH STATUS

Launching now



H&H EDITION DUBAI HARBOUR



Location
DUBAI HARBOUR

Handover
2029

Payment
Plan

50%
CONSTRUCTION

50%
COMPLETION

| Property Type | Min. Size | Min. Price | aed/sqft | Price USD |
|---------------|-----------|------------|----------|-----------|
| 2 Bedroom | 1987 | 8.3m | 4177 | 2.2m |
| 3 Bedroom | 2995 | 13.1m | 4373 | 3.5m |
| - | - | - | - | - |
| - | - | - | - | - |

✓ LAUNCH STATUS

Launching Soon



FAQ - SIMPLE TIPS FOR OFFPLAN INVESTING

01

Do I need to be in the country to invest?

No, everything can be done remotely including signing contracts. Even when it comes to one day re-selling, you can remotely appoint Westcore as your Power of Attorney to complete the sales process and money can be transferred abroad.

02

How are my funds secure?

All transfers to developers are sent directly to registered Escrow accounts. These funds are only accessible to the developer after specific construction milestones. All registered Dubai escrow accounts can be viewed publicly on the Dubai REST app.

03

Can I get a mortgage on the property?

You can, even as a non-resident, but only after the property is completed and handed over. So basically the final instalment payment can be mortgaged - you apply to months before handover. Additionally, you can also open a non-resident bank account in UAE which we can assist with.

04

How should I transfer funds to complete the purchase?

We are able to facilitate all forms of payment. In many cases the purchase can even be done on credit card. **IMPORTANT TIP:** When doing bank transfers it is better to use a FOREX exchange rather than regular banks for preferred rates. Ask our team about our preferred partner. The difference is significant 2-4% loss with banks versus 0.5%.

05

How do I get a Golden Visa?

Total property value in your name must be above 2m AED. This can be spread across multiple properties. It cannot be in a company you own, it must be your personal name. After the property title is registered under your name in Land Department office you can come to UAE and apply for the visa. Processing time is around 1 week and costs 10k AED.

06

Who will manage my property?

Westcore is a full service company that helps with real estate transfers, company setup, visa applications, property management, holiday home operation and more. We will take care of everything related to your property and investments from start to finish.



ONE
PURPOSE
OPENING NEW DOORS INTERNATIONALLY

Invest in Dubai Real Estate - The Next Growth Destination